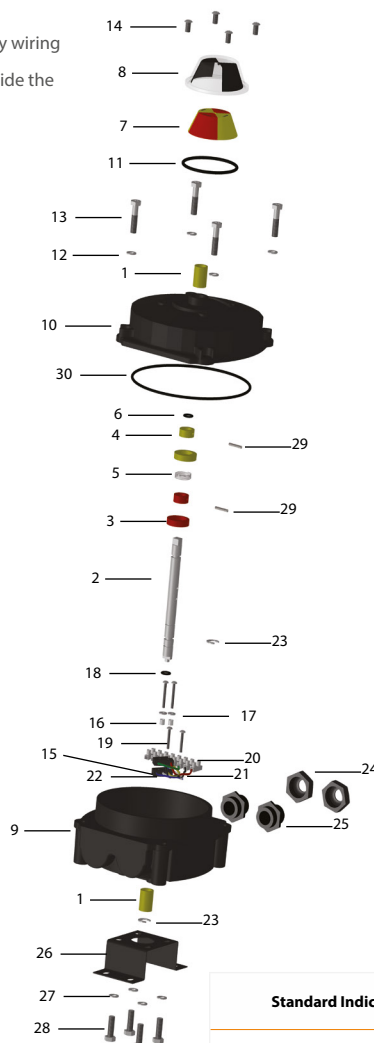
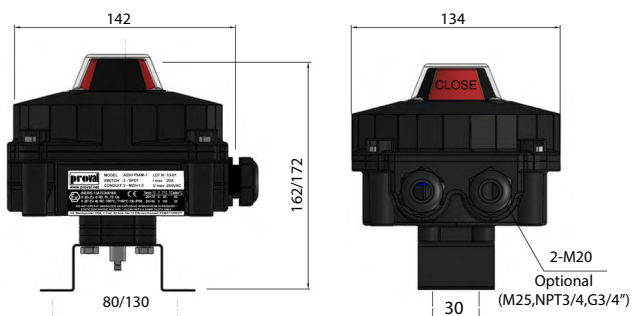


A250 Series Explosion Proof Limit Switch Boxes

A250 PPROVAL A250 PSX Series limit switch boxes are designed to integrate with pneumatically actuated quarter turn valve packages installed in potentially explosive environments and provide both visual and electrical indication of valve position.

General Features,

- Powder coated, corrosion resistant die-cast alu body
- 3D continuous visual position indicator
- Easily Adjustable, spring loaded cams
- Standard IP66 enclosure
- 2 Pc mechanical switches or Inductive sensors
- Easily adjustable brackets and suitable for all NAMUR VDI/VDE interface actuators
- Terminal strip with 8 points to allow for easy wiring and direct connection of solenoid valve inside the switch box.
- Applicable also on manual valves.



No	Part Name	Material	Qty
1	Bushing	Brass	2
2	Stem	AlSi420	1
3	Cam-1	Delrin	2
4	Cam-2	Delrin	2
5	Spring	AlSi301	1
6	Stem O-Ring	NBR	2
7	Indicator	ABS	1
8	Indicator Cam	Polikarbon	1
9	Body	Alu Die Cast	1
10	Cap	Alu Die Cast	1
11	Indicator Seal Ring	NBR	1
12	Thrust Washer	AlSi304	4
13	Screw Cap	AlSi304	4
14	Screw Indicator	AlSi304	4
15	Limit Switch	Plastic	2
16	Switch Thrust Washer	AlSi304	2
17	Spacer Bushing	Plastic	2
18	Screw	AlSi304	2
19	Screw	AlSi304	2
20	Terminal Strip	Plastic	1
21	Cable lug	Copper	16
22	Terminal Cable Set	Copper	1
23	Circlip	AlSi304	2
24	Nut Cable Gland	Plastic/Metal	1
25	Cable Gland	Plastic/Metal	1
26	Bracket	Steel	1
27	Thrust Washer	AlSi304	4
28	Bolt	AlSi304	4
29	Pin	Steel	2
30	Body Seal Ring	NBR	1

Explosion Proof Classification	Ex II 2 GD
	Ex d II B T6 / T5 Gb
	Ex tb IIIC T85°C ~ 100°C Db IP66
Switch Type	Mechanical (Crouzet V3)
	Proximity (IFM/Pepperl+Fuchs)
Conduit Entry	Max 4, M15/M20 or M25
Working Temp.	-20°C K8 +80°C
Terminal Strip	8 Points
Protection Class	IP67
Weight	2 Kg

Model	Switch	Model
A250 PSXM	Crouzet	EF83161.3
A250 PSXP1	P+F	NBB2-V3-E2
A250 PSXP2	P+F	NJ2-V3-N
A250 PSXP3	P+F	SJ3,5-N
A250 PSXP4	IFM	IS5076
A250 PSXP-5	P+F	NBB3-V3-Z4

Bracket Sizerleri

Model	Bracket Type	Mounting Dimensions
MB-1		30x80 H: 20
MB-2		30x80 - 30x130 H: 20-30 Adjustable
MB-3		30x80 - 30x130 H: 40-50 Adjustable

Standard Indicator



L Port Valve Indicator



T Port Valve Indicator

