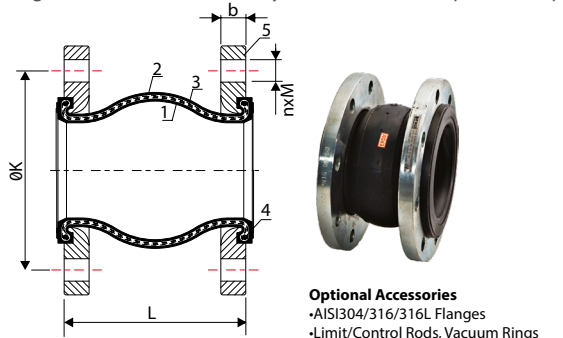
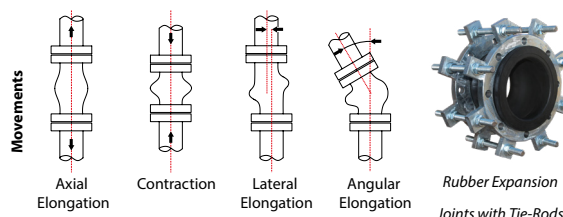


## K100 Series Single Sphere Rubber Expansion Joints with Floating Flanges

Available in sizes ranging from DN32 to DN600. Absorb mechanical vibrations caused by pumps, turbines, compressors and motors. Dampen and insulate against the transmission of noise and undesirable disturbances generated by mechanical equipment. Reduce stress compensating for axial, lateral and angular movements caused by contraction and expansion of pipe lengths due to thermal changes.



**Optional Accessories**  
 • AISI304/316/316L Flanges  
 • Limit/Control Rods, Vacuum Rings



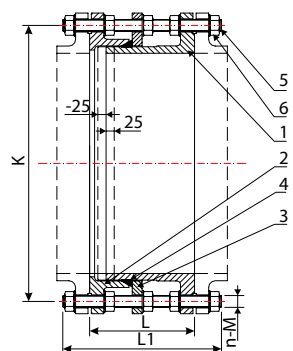
### Dimensions(mm)

Size (DN)	PN	L (mm)	ØK (mm)	b (mm)	n (Qty)	M	Max Allowable Movement			
							Axial Elongation (mm)	Axial Compression (mm)	Lateral Movement (mm)	Angular Movement
32	PN10/16	95	100	16	4	18	6	9	9	15°
40	PN10/16	95	110	18	4	18	6	10	9	15°
50	PN10/16	105	125	18	4	18	7	10	10	15°
65	PN10/16	115	145	20	4	18	7	13	11	15°
80	PN10/16	135	160	20	8	18	8	15	12	15°
100	PN10/16	150	180	22	8	18	10	19	13	15°
125	PN10/16	165	210	24	8	18	12	19	13	15°
150	PN10/16	180	240	24	8	22	12	20	14	15°
200	PN10/16	210	295	24	8	22	16	25	22	15°
250	PN10	230	350	28	12	22	16	25	22	15°
	PN16		355	28	12	26				
300	PN10	245	400	28	12	22	16	25	22	15°
	PN16		410	30	12	26				
350	PN10	255	460	28	16	22	16	25	22	15°
	PN16		470	32	16	26				
400	PN10	255	515	30	16	26	16	25	22	15°
	PN16		525	34	16	30				
450	PN10	255	565	30	20	26	16	25	22	15°
	PN16		585	32	20	30				
500	PN10	255	620	32	20	26	16	25	22	15°
	PN16		650	36	20	33				
600	PN10	255	725	36	20	30	16	25	22	15°
	PN16		770	44	20	36				

Material List	No	Part Name	Material
	1	Internal Liner (Bellow)	EPDM or NBR
	2	External Liner (Bellow)	GGG40, AISI304, AISI316, Bronze
	3	Middle Liner	Naylon Cord Fabric
	4	Wire	Hardened Steel
	5	Flange	St37 or Stainless Steel (Optional)

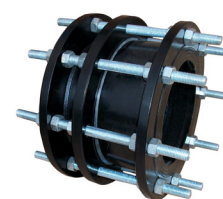
## D100 Series Dismantling Joints

Provide easy access to pumps, valves and flow meters, without having to move large sections of pipework. Allow up to 25 mm of longitudinal adjustment.



No	Part Name	Material
1	End Flange (Long)	Ductile Iron - GGG40
2	End Flange (Short)	Ductile Iron - GGG40
3	Gland Flange	Ductile Iron - GGG40
4	Seal	EPDM/NBR
5	Tie-Rod	Galvanized Steel
6	Nut	Carbon Steel

**Optional Features**  
 • Stainless Steel Studs  
 • Stainless Steel Nuts



**Working Temp.**  
 Min: -15°C, Max: +70°C

### Dimensions(mm)

DN	80	100	125	150	200	250	300	350	400	450	500	600	700	800	900	1000	1200	1400	
PN10	L	175	175	175	175	195	205	225	235	245	245	255	275	275	295	295	315	380	355
	L1	300	300	300	320	340	350	360	380	380	390	410	420	480	520	520	590	590	
	n-M	8-16	8-16	8-16	8-20	8-20	12-20	12-20	16-20	16-24	16-24	20-24	20-27	24-27	24-30	28-30	28-33	32-36	36-39
	K	160	180	210	240	295	350	400	460	515	565	620	725	840	950	1050	1160	1380	1590
	Weight	18	20	24	30	42	62	67	85	105	135	155	225	300	361	400	516	895	1194
PN16	L	175	175	175	175	195	205	225	235	245	255	275	275	295	295	315	335	355	
	L1	300	300	300	320	340	360	400	420	420	440	480	480	520	520	540	600	630	
	n-M	8-16	8-16	8-16	8-20	12-20	12-24	12-24	16-24	16-27	20-27	20-30	20-33	24-33	24-36	28-36	28-39	32-45	36-45
	K	160	180	210	240	295	355	410	470	525	585	650	770	840	950	1050	1170	1390	1590
	Weight	18	20	24	30	45	66	84	107	142	177	200	305	321	469	535	698	1070	1270

\* Weight : Net unit weight in kg.