



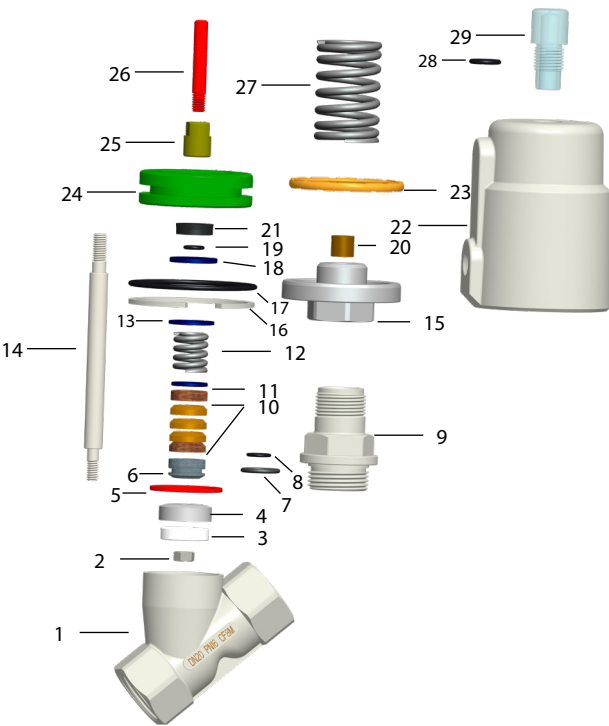
V500 Pneumatic Angle Seat Valves

Proval V500 Series pneumatic angle seat valves are suitable for water, steam, gases and chemicals for open-close applications. The V500 Series valves are having a large use on filling and textile machines.

Due to their superior engineered design, PROVAL V500 Series angle seat valves offer an excellent flow control with low pressure loss. Valves can be installed in any position

preferably with actuator face up. Actuators can be rotated through 360° for tubing.

PROVAL V500 Series angle seat valves are manufactured in spring return Normally Open (NO), Normally Closed (NC) and Double Acting (DA) versions.



Angle Seat Valve Complete with Monitoring Device



Positioner Controlled Angle Seat Valve

Material List

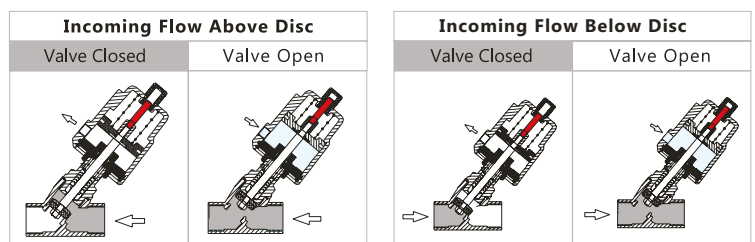
No	Part Name	Material	No	Part Name	Material	No	Part Name	Material
1	Body	CF8M	11	Seat	PTFE	21	Y-Ring	Viton
2	Locking Nut	SS316	12	Spring	SS304	22	Actuator	CF8M
3	Seat	PTFE	13	Washer	SS304	23	Piston O-Ring	Viton
4	Seat Carrier	CF8M	14	Pinion	SS316	24	Piston	AL
5	Body Seal	PTFE	15	Cover	SS304	25	Nut	AL
6	Stem Seal-1	PTFE+Carbon	16	Circlip	SS304	26	Indicator	Nylon
7	Stem Seal-2	PTFE	17	O-Ring	NBR	27	Spring	65Mn
8	Stem Seal-3	PTFE+Carbon	18	Washer	SS304	28	O-Ring	NBR
9	Cap	CF8M	19	O-Ring	NBR	29	Plug	PC
10	Packing	PTFE	20	Bushing	Alloy			

Flow Direction Options

2/2 way-allows flow in either direction.

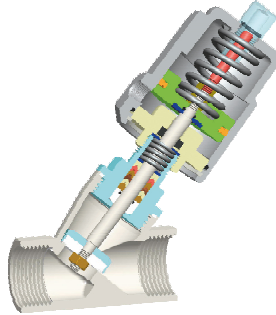
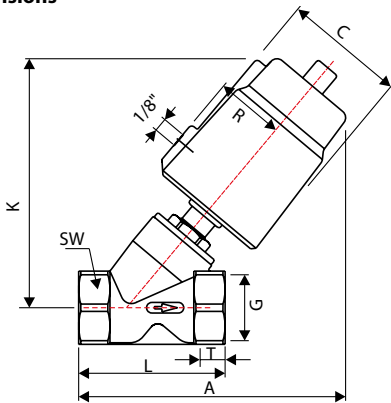
Flow above the disc enables valves to withstand higher pressure.

Flow below the disc slows the closing speed of the valve, thus prevents the possibility of water hammer.



V500 Pneumatic Angle Seat Valves

Dimensions

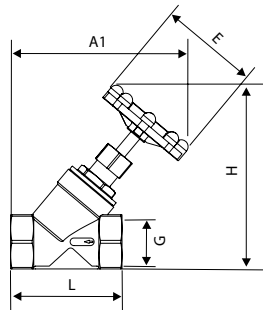
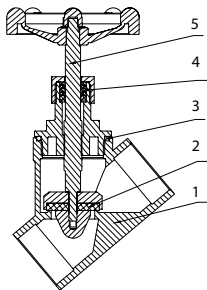


Dimensions and Technical Data

Size (DN)	Thread (G)	Orifice (mm)	Kv (m ³ /h)	Actuator Size	C	R	K	A	T	L	SW	Incoming Flow Above Disc		Incoming Flow Below Disc		
												Max. Working Pressure	Control Pressure	Max. Working Pressure	Control Pressure	
10	3/8"	13	3,8	40	50,5	27	111	119		12	68	27	16 bar	3,0-4,5 bar	11 bar	3,0 bar
				50	60	33	124	131							16 bar	3,0-3,5 bar
15	1/2"	13	4,7	40	50,5	27	111	119		15	68	27	16 bar	3,0-4,5 bar	11 bar	3,0 bar
				50	60	33	124	131							16 bar	3,0-3,5 bar
20	3/4"	18	9,5	50	60	33	128	136		16	75	32	16 bar	3,0-4,0 bar	11 bar	3,0 bar
				50	60	33	136	145							16 bar	3,0-4,5 bar
25	1"	24	18,1	63	75	41	162	169		17	90	40	16 bar	3,0-3,5 bar	14 bar	4,5 bar
				63	112	41	174	187							16 bar	3,0-5,5 bar
32	1-1/4"	31	23,1	90	75	57	220	229		21	116	50	16 bar	2,5-3,5 bar	16 bar	5,0 bar
				63	75	41	175	187							16 bar	3,0-6,5 bar
40	1-1/2"	35	32,9	90	112	57	222	230		21	116	56	16 bar	2,5-4,0 bar	16 bar	5,0 bar
				63	75	41	183	201							12 bar	3,0-7,0 bar
50	2"	45	52,8	90	112	57	232	244		22	138	69	16 bar	2,5-4,5 bar	10 bar	5,0 bar
				90	112	57	262	282							10 bar	2,5-6,0 bar

V510 Series Manual Hand-Wheel Piston Valves

V510 Series valves are having a V shape plug to provide smooth manually adjusted flow regulation.



Material List

No	Part Name	Material
1	Body	AISI316
2	Seal	PTFE
3	Body Seal	PTFE
4	Packing	PTFE
5	Stem	AISI316

Dimensions(mm)

Size	D	E	L	A	H
DN15	1/2"	Ø80	67,5	131	134
DN20	3/4"	Ø80	74	138	141
DN25	1"	Ø80	89	145	148
DN32	1 1/4"	Ø100	109	176	183
DN40	1 1/2"	Ø100	113	180	186
DN50	2"	Ø100	133	183	193

